



Permanent Make-up

Medical Chemical Peels

Micro needle Meso Therapy

Collagen induction

Pigmentation treatments

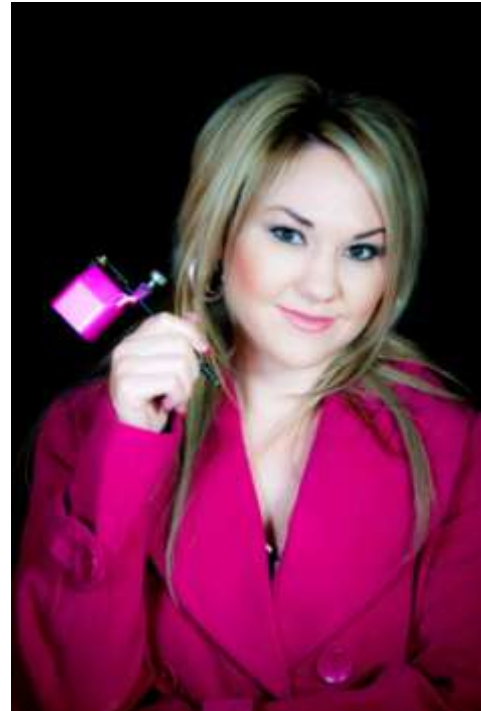
Acne Treatments

Permanent Hair Reduction

Vascular Vessel Reduction

Kryolan Profesional Make-up

Lamelle



Medical Spa treatments and Permanent make-up

Anri Theron 073 012 021 3

www.dermabalance.co.za/www.dermabalance@lantic.net

www.innerbalanceskinclinic.co.za – medical treatment website

Beauty Treatments @ Pecanwood Health & Beauty

Megan 0823365112



***A 24 hour cancellation policy applied to all treatments,
50% of the booked treatment will be levied to your account if
not cancelled in advanced***



Anri Theron CPCP | innerbalance@lantic.net | Cell: 073 012 021 3 | www.dermabalance.co.za
Permanent make-up | Medical Chemical peels | Micro Needling | MesoTherapy | Permanent Hair Reduction
Pigmentation | Vascular vessel Reduction | Medical IPL | Botox | Fillers | Kryolan Profesional Make-up | Lamelle

Credit card facility

Medical Spa Treatments

Combination Treatments Peels/Micro Needle MesoTherapy/IPL
(All Meso cocktails / HA medical masks and solutions contains
Hyaluronic and Growth Factors)

Permanent hair Reduction Intense Pulse Light

Bikini Sides, G String, and Top	R500
Full Bikini	R795
Combination	
Bikini Sides, G string & top/ underarms	R650
Full bikini/Underarms	R950
Chin & Neck Area	R350
Upper Lip	R150
Chin	R200
Body	
Underarms	R250
Male Chest	R950
Tummy	R950
Upper Back	R1100
Lower Back	R1100
½ arm both	R900
Full arm both	R1800
Legs	SQ

Ipulse Additional Ad On to any procedure:

Indicated for:

- Dark spots on hands and face
- Vascular neck pigmentation
- Redness in neck area
- Mottled facial complexion

Spot treatments per Shot	R50
Full Face	R450
Full Neck and chest	R550
Hands treatment	R350
Hands and arms-up to elbow	R550
Neck sides only for pigmentation/redness	R300



Intense Pulse Light Combination Treatments

Advanced Neck & Face

Ipulse Treatment stimulate cell turnover and collagen production this result in a more youthful appearance.

Intense Pulse Light is a light based procedure which addresses surface problems such as:

- Skin redness
- Mottled complexion
- Sun spots
- Age spots
- Age spots on Hands and Neck

AHA Plus with Intense Pulse Light Therapy (face) R695

-Hydration, skin rejuvenation, cell turnover, skin blemishes, collagen stimulation –

AHA with Intense Pulse Light Therapy (Neck & chest) R695

Indicated for: Poikiloderma in neck area/pigmentation & redness

Micro Needle Pulse Light Neck and chestTreatment R950

DermaRoller CIT (medical device) R1900

Medical Peels (1hour)

Every 2 -4 weeks alternate with Meso micro Needling and IPL treatments

- 15% Beta Peel +Retinol R455
- 15% Beta Peel + GF mask R370
- 20% Beta Peel R400
- 20% Beta Peel + TCA refresh R495
- 20%Beta Peel + TCA Liquid + 1ml Retinol R695
- Miami Peel R500

Micro Needle Meso Therapy (1h30)

Treats fine lines, wrinkles, pores, surgical & acne scarring and loose skin on the body by rolling the skin with a Medical Roller and Meso Cocktail Serum, stimulating the production of collagen ,reduce pigmentation and increase skin rejuvenation, this is a pain free treatment as we use the best topical anesthetics to numb the area prior treatments

Skin needling 6 treatments every 4 weeks, all rollers will be disposed after 6 treatments

- Medical Roller (once off) R1900
- Micro Needle Meso Treatment with 1ml Meso serum and HA mask R650 – 4-6 weeks
- Micro Needle Meso Neck/decollate with 2ml serum & mask R850
- Micro Needle Face/neck/decollate with 3ml serum and HA mask R1500 – 4-6 weeks
- Meso Gift face Treatment for Guests (incl. home roller and serum) R2600
(The perfect gift for a special Guest)
- Micro Needle Meso Neck ,serum, HA mask with Ipulse IPL R950
- Micro Needle Meso with Miami/15% Beta peel R950
-



Anri Theron CPCP | innerbalance@lantic.net | Cell: 073 012 021 3 | www.dermabalance.co.za
Permanent make-up | Medical Chemical peels | Micro Needling | MesoTherapy | Permanent Hair Reduction
Pigmentation | Vascular vessel Reduction | Medical IPL | Botox | Fillers | Kryolan Profesional Make-up | Lamelle

<i>Gentle cleanser/ foaming cleanser</i>	150ml	R350
<i>Daily cellular repair cream</i>	50ml	R560
<i>Hydrating sunscreen</i>	70ml	R368
<i>Ultra moisturizing renewal cream</i>	50ml	R940
<i>Eye regeneration PLUS cream</i>	15ml	R550
<i>Ageing Reversal Neck Serum</i>	30ml	R545
<i>Intensive Cellular Regeneration Serum</i>	30ml	R1095

Luminesce Home Care Range: pigmentation.

<i>Luminesce Brightening Cleanse</i>	250 ml	R440
<i>Luminesce Brightening Defense</i>	70 ml	R350
<i>Luminesce Brighter Day</i>	50 ml	R550
<i>Luminesce Evening Glow</i>	50 ml	R660



Correctives Home Care Range

<i>Brighter Concentrate</i>	30 ml	R825
-----------------------------	-------	-------------

Ovelle® dermal supplements

<i>Ovelle® 60 tablets per box</i>	1 x	R420
-----------------------------------	-----	-------------



Clarity / Acnevelle:

<i>Clarity Active Cleanse</i>	150ml	R225
<i>Clarity Corrective AM</i>	50ml	R397
<i>Clarity Corrective PM Plus</i>	50ml	R454
<i>Clarity Active Control</i>	75ml	R225
<i>Acnevelle</i>	60 Caps	R196



Meso Micro Roller

<i>C8 home use roller with HA serum</i>		R 2200
---	--	---------------

<i>Medical Meso roller</i>		R1900
----------------------------	--	--------------

<i>QSS tinted sun block foundation</i>		R270
--	--	-------------

<i>HA serum</i>		R395
-----------------	--	-------------

<i>Barrier Repair cream</i>		R310
-----------------------------	--	-------------



Kryolan Make-up

<i>Kryolan Brush set</i>	R550
<i>Perfect Matt skin primer before foundation</i>	R410
<i>Ultra F Compact G117/FELO/ELO/LO</i>	R280
<i>Fixing powder 10g 3/4/ 4,5/5</i>	R110
<i>Sheer tan HD mouse G177-110/FELO-240/ELO-360/LO-250</i>	R420
<i>Dual finish</i>	R420
<i>Derma Colour (order on request waiting period 4 weeks)</i>	R280
<i>Lipliner (121-pink,125-nude,123-red brow)</i>	R150
<i>High gloss/candy/crystal rose/surise/first love</i>	R310
<i>Lip emphasiser Plump up</i>	R280
<i>Lipliners/eyeliners</i>	R150
<i>Eyeshadows pallet 5x big round</i>	R420
<i>Single viva /Kryolan colours</i>	R180
<i>3 viva colours</i>	R495
<i>8 viva colours</i>	R995
<i>16 viva colours</i>	R1500
<i>Tweezers</i>	R100
<i>HD skin liners</i>	R250
<i>Mascara</i>	R250

A 24 hour cancellation policy applied to all treatments, 50% of the booked treatment will be levied to your account if not cancelled in advanced

Credit card facility

*No make-up/ foundation/products/ can be returned
50% deposit is required for all make-up pallets, and foundations orders.*



Anri Theron CPCP | innerbalance@lantic.net | Cell: 073 012 021 3 | www.dermabalance.co.za
Permanent make-up | Medical Chemical peels | Micro Needling | MesoTherapy | Permanent Hair Reduction
Pigmentation | Vascular vessel Reduction | Medical IPL | Botox | Fillers | Kryolan Profesional Make-up | Lamelle

Permanent Make-up

Anri Theron CPCP – www.dermabalance.co.za (14 years experienced trained in USA)

Eyeliners	R1800
Eyebrows	R1800
Full lips	R2800
Lipliner and Blending	R2500

All procedures include a touch-up 3-4 weeks after





Beauty Treatments @ Pecanwood Health & Beauty

Megan 082 336 5112

Regim A Facial/Hand/Back Treatments

Managers signature facial	R550
Purifying facial	R390
Hydrating lifting facial	R680
Ultimate rejuvenatation facial	R800
Back Treatment	R680
Hand treatment	R170

Optional extras to enhance your facial.

Eye treatment	R100
Lip treatment	R100
Specialised Masks	R150

Massage & Relaxing Body Treatments

Swedish/Sport Massage/Deep Tissue/AromaTherapy/Reflexology/HotStone

Any of these massage techniques can be applied in the following sets of time

30 minute massage	R270
45 minute massage	R330
60 minute massage	R400
90 minute massage	R610

Top to Toe body Butter Massage (1hour)	R410
African potato body scrub & Back Massage (1 hour)	R410
Deluxe essence of Africa Body Treatment (2 hours) scub/wrap/full body massage	R750
ANESI Body Relaxation & Slimming Treatments (course of 5 Treatments – R3100)	
ANESI Fango Legerete detox mud wraps(1 hour and 20 min)	R720
ANESI Fango Silhouette slimming mud wrap (1hour and 20 min)	R720

Sunbed 10 x 20min sessions	R200
Vibration plate 10-minute session	R30
Vibration plate 10 sessions	R250

Manicures and Pedicures

Manicure	R160
Deluxe Manicure with Paraffin	R190
Repaint	R 80
Pedicure	R200
Deluxe Pedicure with Paraffin	R240
French Polish	Add R 60



Anri Theron CPCP | innerbalance@lantic.net | Cell: 073 012 021 3 | www.dermabalance.co.za

Permanent make-up | Medical Chemical peels | Micro Needling | MesoTherapy | Permanent Hair Reduction
Pigmentation | Vascular vessel Reduction | Medical IPL | Botox | Fillers | Kryolan Profesional Make-up | Lamelle

Waxing Hair removal

Ankle to knee	R140
Full leg	R170
Back	R165
Bikini	R 80
Brazilian	R 120
Arm	R 120
Underarm/lip/brows/chin/toes&feet	R70/R70/R70/R70/R70

Tinting & Shaping

Eyelash tint	R 80
Eyebrow tint	R 70
Eyebrow shaping	R70
3 in 1	R220